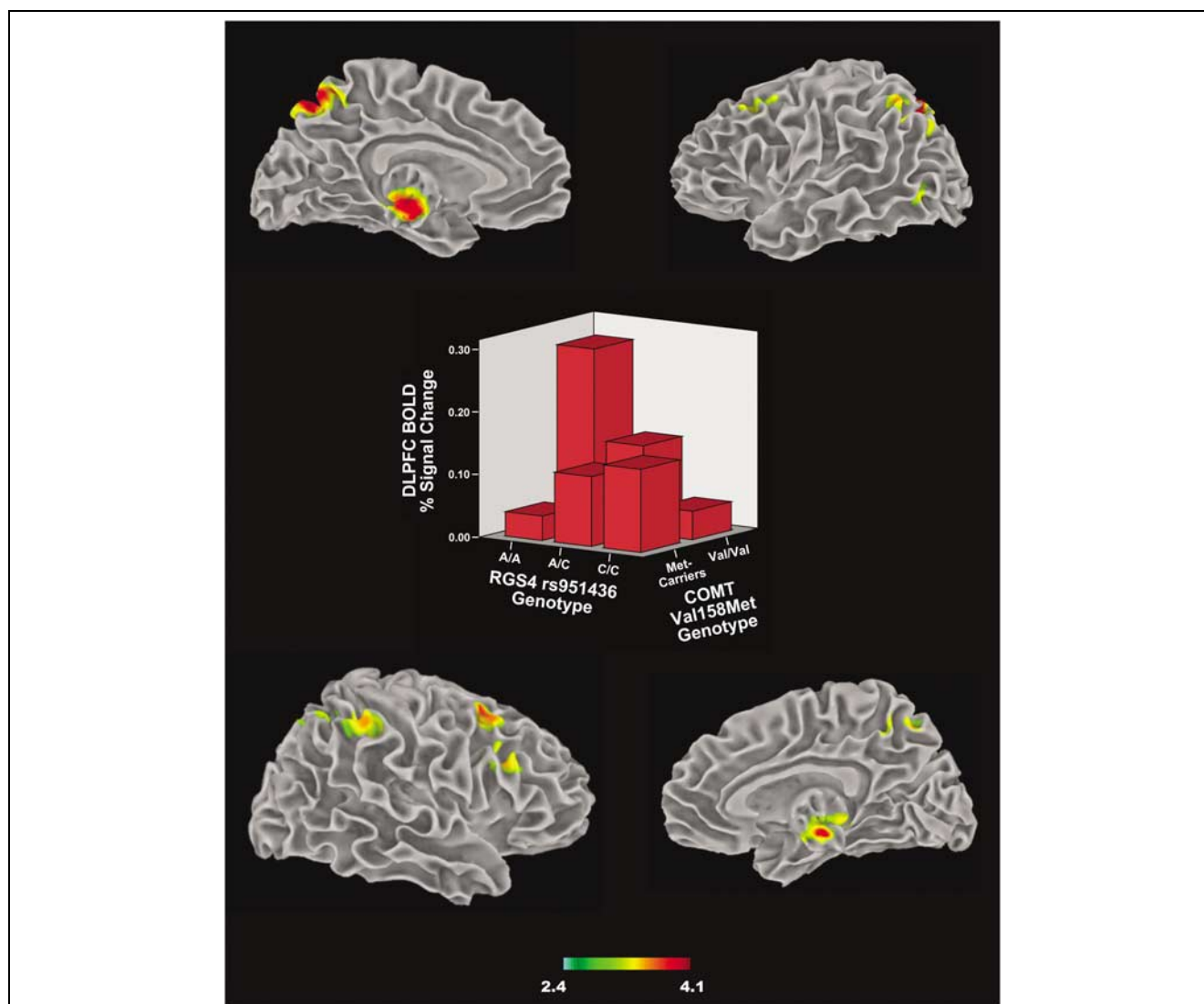


IMAGE

Imaging epistasis *in vivo*: COMT and RGS4

JW Buckholtz^{1,2}, M Prust^{1,2,3}, S Sust^{1,2}, HY Tan^{1,2}, VS Mattay^{1,3}, RE Straub¹, A Meyer-Lindenberg^{1,3}, DR Weinberger¹ and JH Callicott^{1,2}

¹Clinical Brain Disorders Branch, Genes, Cognition, and Psychosis Program, Division of Intramural Research, Department of Health and Human Services, National Institute of Mental Health, National Institutes of Health, Bethesda, MD, USA; ²Unit on Dynamic Imaging Genetics, Division of Intramural Research, Department of Health and Human Services, National Institute of Mental Health, National Institutes of Health, Bethesda, MD, USA and ³Neuroimaging Core Facility, Division of Intramural Research, Department of Health and Human Services, National Institute of Mental Health, National Institutes of Health, Bethesda, MD, USA



Molecular Psychiatry (2007) 12, 885; doi:10.1038/sj.mp.4002085

The image depicts the interaction between COMT and RGS4 genotypes on brain activation during working memory. Voxelwise interaction effects are mapped onto a rendered white matter surface (upper right and left, lower right and left); color bar (bottom center) represents *t*-score for effect. The center graph demonstrates that the impact of allelic variation in RGS4 on brain function critically depends on COMT genetic background. For more information on this topic, please refer to the article by Buckholtz *et al.* on pages 893–895.