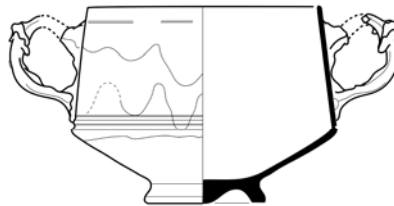


## KENCHREAI FIELD SCHOOL 2009 ARCHAEOLOGY, HISTORY AND CULTURE IN GREECE

Joseph L. Rife, Associate Professor of Classical Studies

During the Roman Empire, Kenchreai, the port of the great city of Corinth on the Aegean Sea, was one of the busiest harbors in all southeastern Europe. Frequent ships arrived from distant lands bringing travelers of diverse backgrounds and a bountiful cargo of wine, spices, marble, and exotic wares. Kenchreai flourished as a port where Greeks, Romans, and eastern immigrants lived together in prosperity. Their deities came from all over the ancient world. The community possessed not only one of the most famous mystery-cults of the Egyptian goddess Isis but also one of the oldest Christian congregations in Greece, nurtured by St. Paul. Roman Kenchreai was thus a place of vibrant pluralism: native and foreign, rich and poor, pagan and Christian.

This seven-week summer course introduces students to the archaeology, history and culture of Greece through participation in a field school and accompanying seminars and excursions. The Kenchreai Excavations, directed by Professor Rife, provide a unique opportunity to learn about the past first-hand. Students will learn basic field techniques in excavation, survey, and the analysis of architecture, artifacts and bones while exploring ancient churches, temples, houses, and tombs at one of Greece's most spectacular seaside archaeological sites. Apart from fieldwork, students will attend a series of seminars by leading experts in several fields, from ancient religion to Mediterranean geology, and they will join excursions to major sites and museums in the region, such as Corinth, Perachora, Mycenae, Nemea, Epidauros, and Nafplion. The excavation team stays at a family-run boarding house in Archaia Korinthos, on the site of ancient Corinth, where we enjoy the natural beauty of the countryside and the easy rhythms of a traditional village community.



**REQUIREMENTS:** Each week students participate in fieldwork for five days and attend one seminar and two excursions. Required readings cover the archaeology and history of Kenchreai and the Corinthia and archaeological methods and ethics. Graded assignments include quizzes on chronology and geography; a field diary; one on-site oral report and write-up; one research paper on an artifact or building at Kenchreai; and a final essay-test on interpretative themes. Students are evaluated on these graded assignments; regular and prompt attendance; positive and productive cooperation in a team effort; conscientious preparation; and thoughtful and appropriate response during discussions.

*COST:* Approximately \$7,400. The course fee covers tuition, full room and board, and all program excursions in Greece. Airfare to/from Athens, train fare to/from Corinth, and incidental expenses are not included.

*DATES:* ca. May 29-July 7, 2009.

*CREDITS:* 3 credit hours.

*FOR MORE INFORMATION PLEASE CONTACT PROF. RIFE AT*  
[joseph.rife@vanderbilt.edu](mailto:joseph.rife@vanderbilt.edu).